

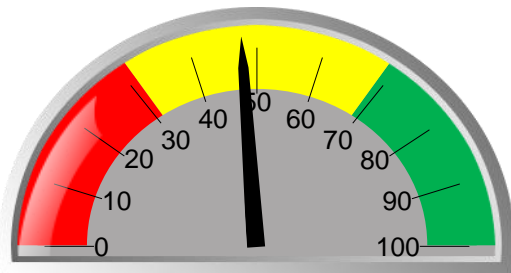
Name: **John Sample** Sample: **Paddock 1** Analysis no.: **0-0** Date: **1/01/2001**

Customer name John Sample
Client or treatment name New
Sample or replicate name Paddock 1
Crop or type Wheat
Weeks after emergence 12

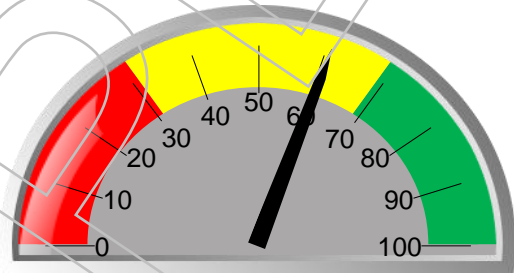
Sample date 1/01/2001
Received date 1/01/2001
Agent John Sample & Sons
Authorised by Dr Ash Martin
Analysis no. 0-0

Soil Indicators

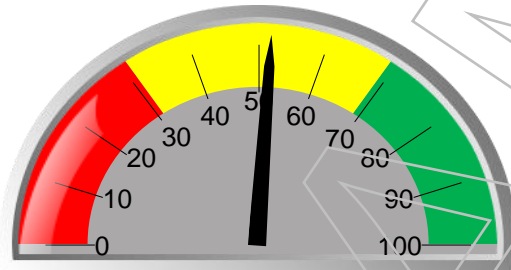
Nutrient solubilisation rate



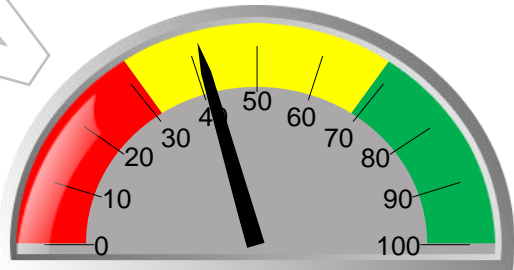
Nutrient cycling rate



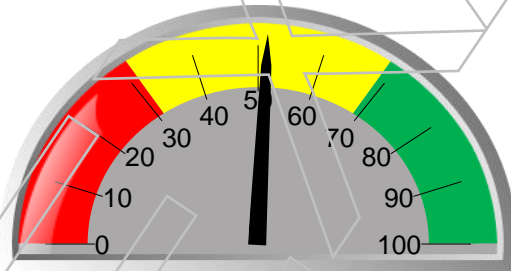
Disease resistance



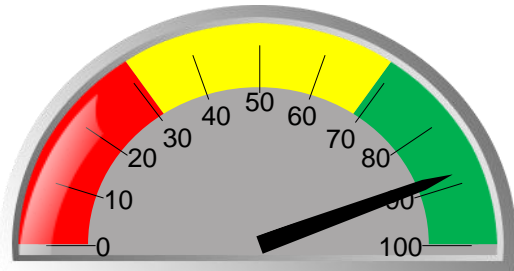
Drought resistance



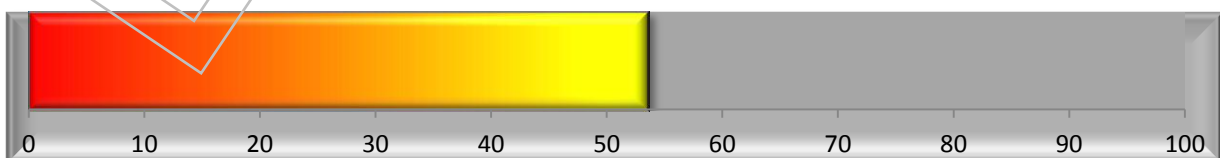
Nutrient accessibility (VAM)



Residue breakdown rate



Overall microbial health



For more information about these indicators visit www.microbelabs.com.au

Key Microbe Groups

Group	Biomass (mg/kg)	
	Yours	Guide
Total microorganisms	44.6	50.0
Total bacteria	4.5	15.0
Total fungi	39.6	33.8
Bacteria		
Pseudomonas	0.444	1.000
Actinomycetes	0.608	1.000
Gram positive	3.455	11.250
Gram negative	1.085	3.750
True anaerobes	BDL*	0.005
Eukaryotes		
Protozoa	0.486	1.250
Mycorrhizal fungi (including VAM)	5.148	10.000

Useful indicators	Yours		Guide
	Yours	Guide	
Fungi : Bacteria	8.7	2.3	
Total : Anaerobic bacteria	N/A	3000	
Microbial diversity	32.9	80.0	

Nutrients held in microbes	Concentration (mg/kg)	
	Yours	Guide
Nitrogen (N)	2.218	3.450
Phosphorus (P)	1.337	1.500
Potassium (K)	0.446	0.500
Sulphur (S)	0.446	0.500
Calcium (Ca)	0.223	0.250
Magnesium (Mg)	0.223	0.250
Carbon (C)	20.070	22.688

*BDL = Below Detectable Limit (0.001 mg/kg)

Key



Comments (Detailed Custom Report available - see Order Form)

The total mass of microbes in your sample was good. Biomasses of other key desirable microbe groups ranged from poor to fair, to very good (Total fungi). Fungi are important for breakdown and nutrient release from organic matter. The Fungi to Bacteria Ratio was elevated, which could be the result of relatively high amounts of organic residues in the soil. Microbial diversity was fair, but could be improved. These results suggest that management practices should initially focus on improving bacterial biomass. Re-test periodically, and once bacterial biomass has improved concentrate on building microbial diversity and biomasses of any other key desirable groups that remain low.

Explanations

The Microbe Wise test measures the biomasses of key microbial groups directly from your sample. It uses molecular ('DNA type') technology to analyse the unique cell membrane 'fingerprint' of each microbe type to identify and quantify key groups important to soil processes. This method is more accurate and precise than other methods, such as direct microscopy or plate culture, because it uses chemical extraction to remove the maximum amount of microbial material from the sample and is repeatable to 0.01% between replicate analyses. It measures organisms that are alive or recently dead (within a few days). Always compare your results with a control sample. Guide values are included as a help, but because a large number of factors affect microbiology the guide levels may not be optimal for your specific conditions. Visit www.microbelabs.com.au for more information.

Disclaimer

Analysis by Microbiology Laboratories Australia Pty Ltd ACN 145 073 481. The information in this report should be used under consideration of particular production conditions. The guide levels are derived from published data and ongoing research carried out by Microbiology Laboratories Australia. They are intended as a general guide only and do not take into account your specific conditions. Comparison of results with those obtained using other methods may be inaccurate, as accurate interpretation relies on specific sampling and analysis methods. Microbiology Laboratories Australia and its employees or agents will not be liable for any loss or damage arising from the use of the information supplied in this report. Please seek specific guidance and recommendations from a qualified agriculture professional.