

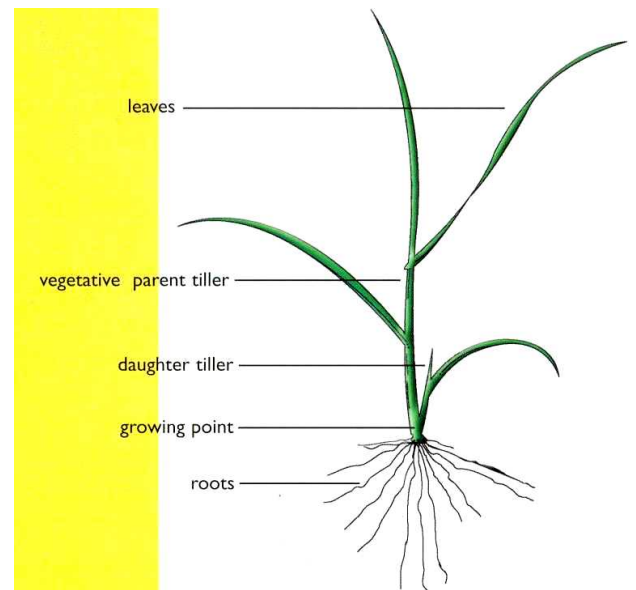
Dairy Pasture

Timing: Sample at stage 1.2 (2nd leaf) of grasses.

Sample Volume: 20 x 10cm² patches.

Sampling: Collect the pasture sample (mix of all species) from a representative area (1-2ha) within the paddock.

Plant part for analysis: Cut or pull plants off at about 2-3 cm above the soil surface.



Pasture growth stages

Primary Stage	Secondary Stage	Description	Comments
			Leaf development
1	1.1	Pre-grazing	1 st leaf unfolded from the growing point of the tiller.
	1.2		2 nd leaf unfolded on the opposite side to the first.
	1.3		3 rd leaf unfolded.
2	2.1	Post-grazing	Recently grazed no significant re-growth

Growth Stage numbering system is in accordance to the extended BBCH, a uniform coding of phenologically similar growth stages for all plant species

© 2008 AgVita Analytical Pty Ltd., PO Box 188, Devonport TAS 7310
Ph: 03-6420 9600, Fax 03-6427 0230, info@agvita.com.au, www.agvita.com.au